

Nishinari Ward, Osaka City

Custom-built home by Sekisui House

Price: 288,000,000 yen

Shimomibashi Line "Tsumori" Station, 6-minute walk
9LDK + attic storage + sauna room

Object summary:

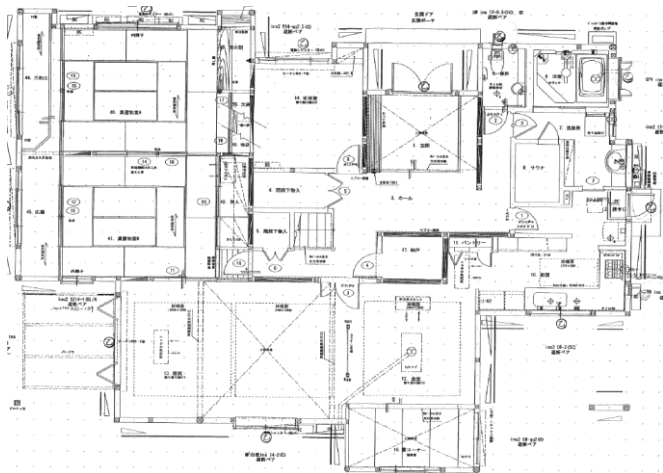
- ◎ 8 Tsurumibashi, Nishinari-ku, Osaka City ◎ Freehold
- ◎ Land use: Residential ◎ Zoning: Semi-industrial zoning
- ◎ Urban Planning: Within city planning area ◎ Built: January 2002
- ◎ Reinforced concrete Two-story wooden house with tiled roof
- ◎ Land area: 402.32m² ◎ Floor area: 361.25m²
- ◎ Building coverage ratio: 80% ◎ Floor-area ratio: 300%
- ◎ Water: Public / Gas: City gas / Sewer: Public sewer
- ◎ Garage parking for 2 cars (with electric shutter)
- ◎ Living in ◎ Negotiable



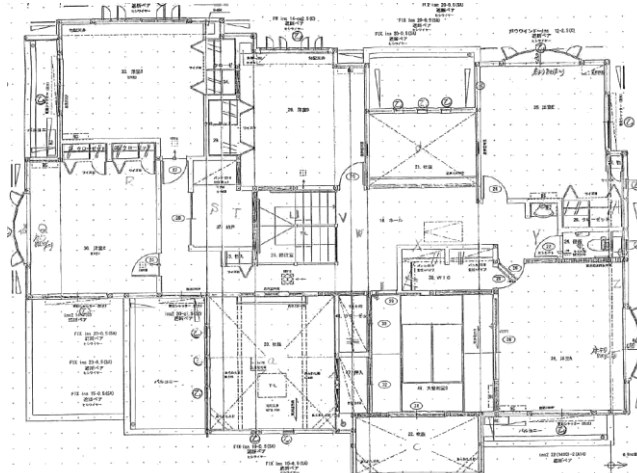
Exterior



Garden



First-floor layout plan



Second-floor layout plan

Mash Co., Ltd.

3-11, Fujishirodai 2 chome, Suita City, Osaka Prefecture
Osaka Prefecture Governor License (2) No. 58189
Main Line (Japanese): 06-6450-6188
English and Chinese Service Hotline : 090-9879-4615

- ◎ Land area of approximately 402.32m² ◎ Garage parking for 2 cars (with electric shutter)
- ◎ Equipped with SECOM home security system
- ◎ Spacious 9LDK layout ◎ Dining area equipped with a large range hood
- ◎ Underfloor heating throughout the LDK (4 zones in total)