

Exterior



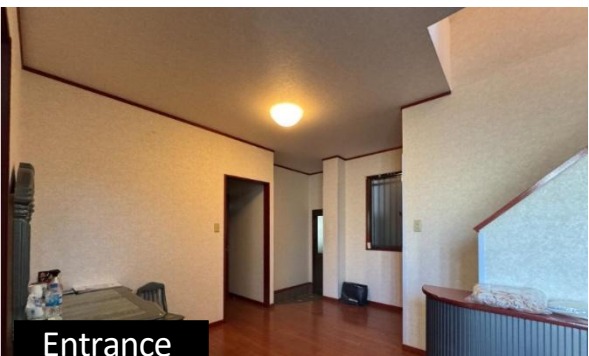
Living Room



Bedroom



Garage



Entrance



Dining Room

◎ "Sanadayama Elementary School" 4-minute walk ◎ "Kozu Junior High School" 2-minute walk  
◎ "Hankyu Oasis Uehommachi Store" 7-minute walk ◎ "Sanadayama Park" 5-minute walk

**Mash Co., Ltd.**

3-11, Fujishirodai 2 chome, Suita City, Osaka Prefecture  
Osaka Prefecture Governor License (2) No. 58189  
Main Line (Japanese): 06-6450-6188  
English and Chinese Service Hotline : 090-9879-4615

# Detached House in Esashicho, Tennoji Ward, Osaka City Price: 210,000,000 yen

- Osaka Metro Nagahori Tsurumi-ryokuchi Line  
"Tamatsukuri Station" – 10-minute walk
- Kintetsu Namba Line  
"Osaka-Uehommachi Station" – 12-minute walk

Object summary:

- ◎ 9-8 Esashicho, Tennoji Ward, Osaka City ◎ Freehold
- ◎ Land use: Residential ◎ Zoning: Category II Residential Zone
- ◎ Urban Planning: Within city planning area ◎ Built: February 2002
- ◎ Reinforced concrete structure, 3 stories above ground
- ◎ Land area: 117.35m<sup>2</sup> ◎ Floor area: 248.92m<sup>2</sup>
- ◎ Building coverage ratio: 80% ◎ Floor-area ratio: 300%
- ◎ Water: Public / Gas: City gas / Sewer: Public sewer
- ◎ Shuttered garage available
- ◎ Vacant ◎ Negotiable



- ◎ Land area of approximately 117.35m<sup>2</sup> ◎ Shuttered garage available
- ◎ Steel-frame structure built in February 2002 ◎ Spacious 5LDK layout
- ◎ Currently vacant