



Luxury Tower Apartment CiELLA TOWER Osaka Fukushima

Mash Co., Ltd.
3-11, Fujishirodai 2 chome, Suita City, Osaka Prefecture
Osaka Prefecture Governor License (2) No. 58189
Main Line (Japanese): 06-6450-6188
English and Chinese Service Hotline: 090-9879-4615

Property Information



Address: 7-chome 18-20, Fukushima-ku, Osaka

Completion date: December 2023

Structure: Reinforced concrete structure

Total number of households: 157 units

Floor/Total floors: 21 floors/30 floors above ground

Exclusive area: 62.79m²

Construction: Kajita Engineering Co., Ltd.

Management company: Kanden Community Co., Ltd.

Management form: Full entrustment

Land rights: Freehold

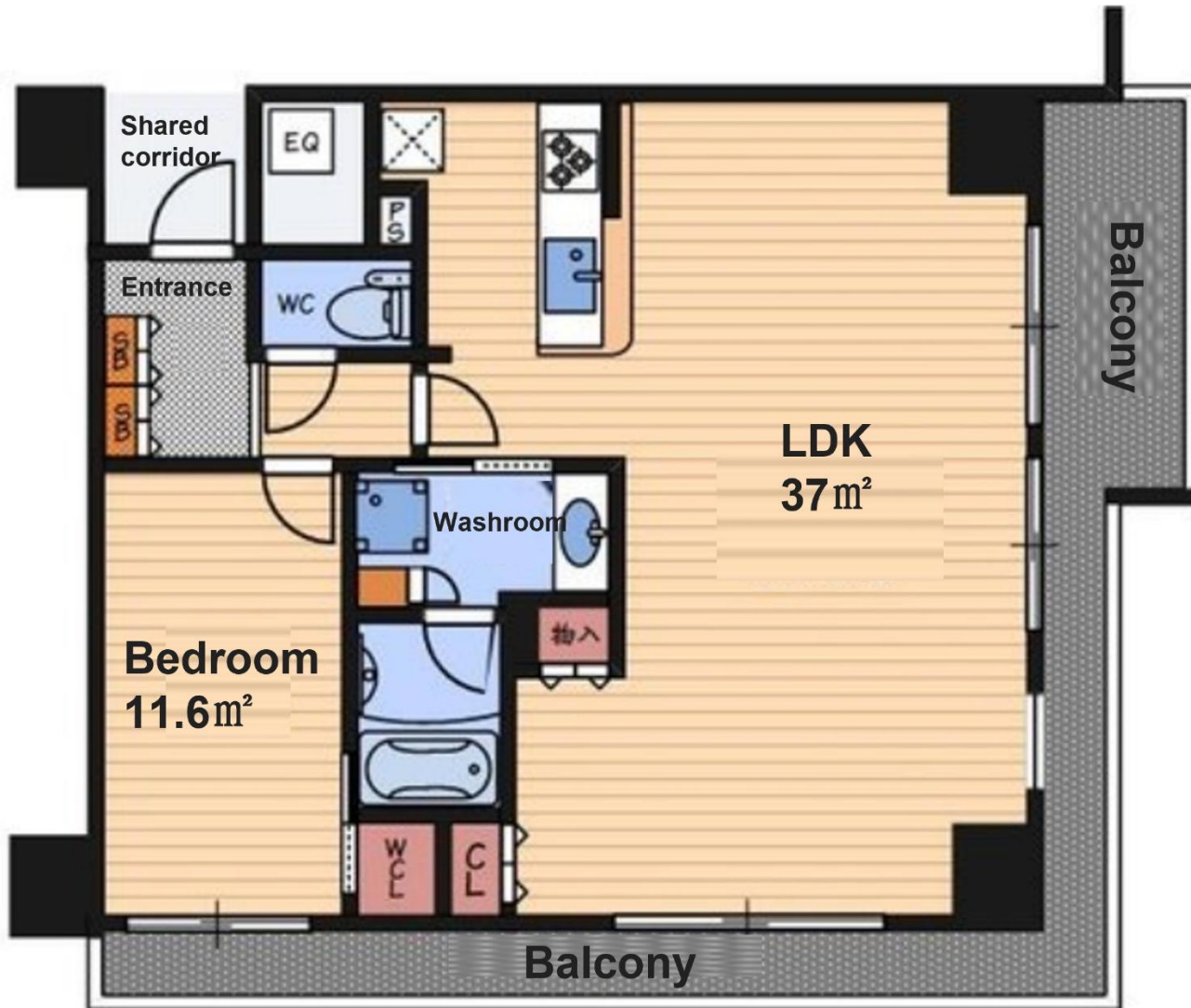
Transportation:

JR Osaka Loop Line "Fukushima" Station, about 5 minutes walk

Hanshin Main Line "Fukushima" Station, about 7 minutes walk

JR Tozai Line "Shin-Fukushima" Station, about 8 minutes walk

Room Plan



Price: 93,800,000 yen

Unit type: 1LDK

Main orientation: Northeast

Management fee: 15,600 yen/month

Repair fund: 7,000 yen/month

Parking: No space

Current status: Living

Delivery time: Please inquire

Remarks:

Pets are allowed, and it can be used as an office (regulations must be followed)

Northeast corner apartment, good lighting and view

Furniture and appliances can be delivered, and you can enjoy the Yodogawa Fireworks Festival

Surrounding living facilities:

Fresh supermarket Kent Fukushima store: 2 minutes walk (83m)

7-11 Osaka Kinrankai store: 2 minutes walk (114m)

Private Kinrankai High School: 3 minutes walk (202m)

Osaka Seitenmae Post Office: 4 minutes walk (293m)

Daikoku Drugstore Fukushima Station: 5 minutes walk (334m)

Urae Park: 6 minutes walk (423m)

Osaka Kita Rehabilitation Hospital: 7 minutes walk (485m)