



Luxury Tower Apartment BAY CITY TOWERS KOBE WEST

Mash Co., Ltd.
3-11, Fujishirodai 2 chome, Suita City, Osaka Prefecture
Osaka Prefecture Governor License (2) No. 58189
Main Line (Japanese): 06-6450-6188
English and Chinese Service Hotline: 090-9879-4615

Property Information



Address:
13-2 Shinko-cho, Chuo-ku, Kobe City, Hyogo Prefecture

Completion date: February 2023

Structure: Reinforced concrete structure

Total number of households: 346 Floor

Total floors: 26 floors/1 underground floor, 27 floors above ground

Owned area: 72.67m²

Construction: Maeda Construction Industry Co., Ltd.

Management company: Sumitomo Real Estate and Building Service Co., Ltd.

Management form: All entrusted (daily operation)

Land rights: Freehold

Transportation:

Kobe Municipal Subway Coast Line "Former Settlement · Daimarumae" Station 10 minutes walk

JR Tokaido · Sanyo Main Line "Sannomiya" Station 17 minutes walk

Kobe Municipal Subway Seishin · Yamanote Line "Sannomiya" Station 15 minutes walk

Room Plan

Unoccupied after completion in February 2023

Price: 109,000,000 yen

Unit type: 2LDK

Main orientation: West

Management fee: 27,473 yen/month

Renovation fund: 10,264 yen/month

Parking lot: Available (25,000-32,000 yen/month)

Current situation: Vacant

Delivery time: Please inquire

Remarks:

Pets are allowed (subject to regulations)

Concierge service is provided, equipped with sky lounge, remote office lounge and gym

Surrounding environment:

FamilyMart Sannomiya Kyomachi store...about 450 meters (6 minutes walk)

Daimaru Kobe store...about 650 meters (9 minutes walk)

OS drugstore...about 900 meters (12 minutes walk)

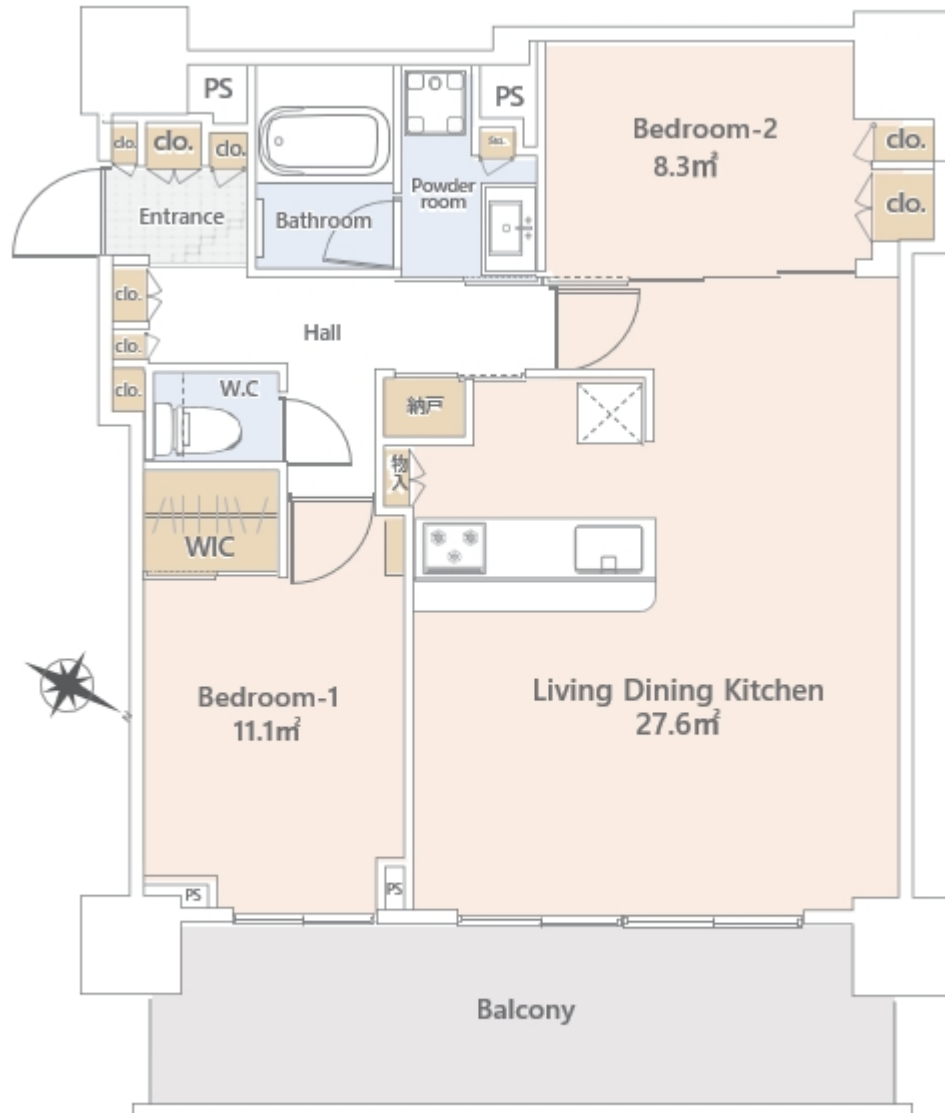
Sannomiya store Nakain clinic...about 700 meters (9 minutes walk)

Seria Sannomiya Center Street Store...about 900 meters (12 minutes on foot)

Flower Clock Square...about 600 meters (8 minutes on foot)

Children's Book Forest...about 600 meters (8 minutes on foot)

atoa (aquarium)...about 190 meters (3 minutes on foot)



※ In case of discrepancies between the drawing and the actual condition, the actual condition shall take precedence.