



Osaka City
Premium Apartment
Itohpia Abeno
Matsuzaki-cho Tokiwa-dori

Mash Co., Ltd.
3-11, Fujishirodai 2 chome, Suita City, Osaka Prefecture
Osaka Prefecture Governor License (2) No. 58189
Main Line (Japanese): 06-6450-6188
English and Chinese Service Hotline: 090-9879-4615

Property Information



Address: 2-10-1 Matsuzaki-cho, Abeno-ku, Osaka-shi, Osaka Prefecture, Japan

Completion Date: March 2001

Structure: Reinforced concrete structure

Total Units: 126 units

Floor/Total Floors: 9th floor (Unit 901) / 1 basement floor and 15 floors above ground

Exclusive Area: 80.29 m²

Construction Company: Sato Industrial Co., Ltd.

Management Company: ITOCHU UrbanCommunity Co., Ltd.

Management Type: All commissions/daily service

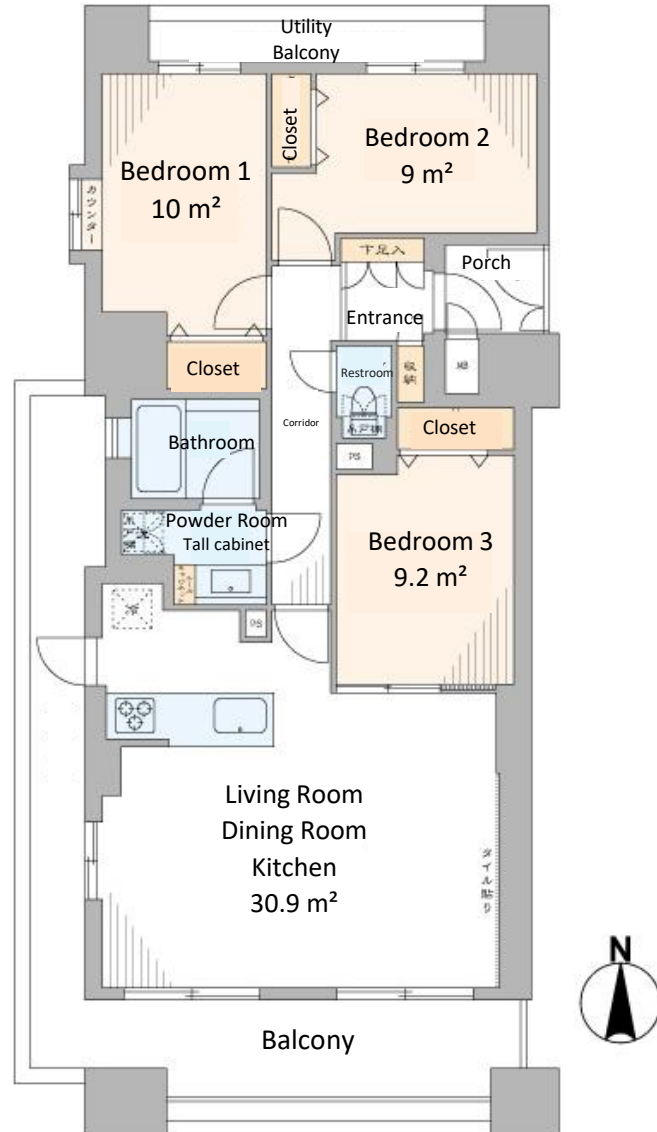
Land Ownership: Freehold

Access:

- 5-minute walk from Tennoji Station on the Osaka Metro Midosuji Line and Tanimachi Line
- 4-minute walk from Osaka Metro Tanimachi Line "Abeno" Station
- 3-minute walk from "Osaka Abenobashi" station on the Kintetsu Minami-Osaka Line

Room Plan

Fully Renovated in October 2024



Price: 81,900,000 yen

Layout: 3LDK

Main Orientation: south, west, north

Balcony Area: 23.25 m²

Management Fee: 7,390 yen/month

Repair Reserve Fund: 28,900 yen/month

Parking: 8,250~17,600 yen/month)

Current Status: Vacant

Move-in Date: Immediate

Remarks:

House type with lighting on three sides: south, west and north
It is only a 5-minute walk from Tennoji Station and there are 4 lines available.

It is only 350 meters away from Tokiwa Elementary School.

Room Photos

