



PLANE-SUPERIOR GRANGE

Sumiyoshi Honmachi Luxury condominium

Mash Co., Ltd.
3-11, Fujishirodai 2-chome, Suita City, Osaka Prefecture
Osaka Prefecture Governor License (2) No. 58189
Main Line (Japanese): 06-6369-7347
English and Chinese Service Hotline : 090-9879-4615

Property Information

**Address:**

1-19-2 Sumiyoshi Honmachi, Higashinada Ward, Kobe City

Completion Date: March 2012

Structure: Reinforced concrete structure

Total Units: 15 units

Floor/Total Floors:

2nd floor (Unit 201) / 5 floors above ground, 1 basement

Exclusive Area: 94.12m²

Construction Company: Obayashi Corporation

Management Company:

Haseko Community Co., Ltd. (West Japan Division)

Management Type:

Fully entrusted / Daytime Onsite Concierge

Land Rights: Freehold

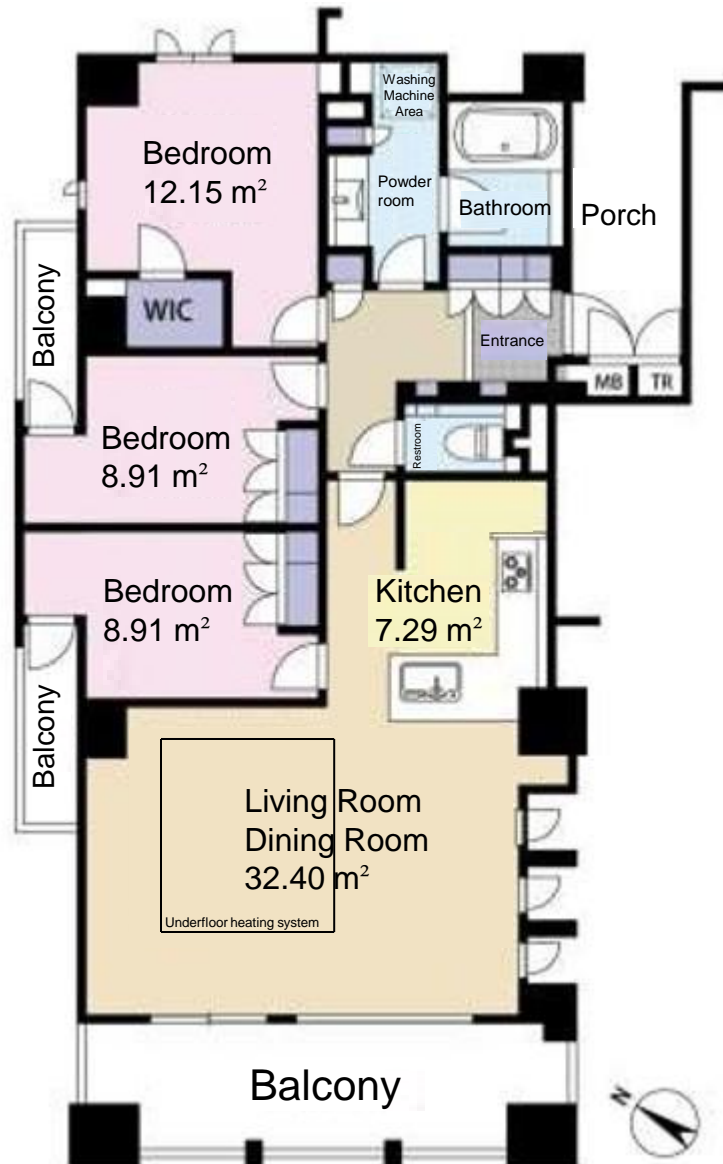
Acess:

5-minute walk to JR Tokaido Line "Sumiyoshi" Station

5-minute walk to Rokko Liner "Sumiyoshi" Station

15-minute walk to Hankyu Kobe Line "Mikage" Station

Room Plan



Price: 89,980,000 yen

Layout: 3LDK

Main Orientation: Southwest

Management Fee: 32,190 yen/month

Repair Reserve Fund: 8,000 yen/month

Parking:

Spaces available (confirmation required).
Monthly fee: 18,000–30,000 yen

Current Status: Vacant

Handover Timing: Immediate

Remarks:

Pet-friendly residence.

Partial wallpaper renovation and full house cleaning completed in December 2024.

Surrounding Environment:

1,000 meters to Kobe Municipal Sumiyoshi Elementary School.

550 meters to Kobe Municipal Sumiyoshi Junior High School.

Room Photos

