



Central Osaka Luxury Condominium CITY HOUSE Minamimorimachi

Mash Co., Ltd.
3-11, Fujishirodai 2 chome, Suita City, Osaka Prefecture
Osaka Prefecture Governor License (2) No. 58189
Main Line (Japanese): 06-6369-7347
English and Chinese Service Hotline : 090-9879-4615

Property Information

Address: 5-2-6, Nishitenma, Kita Ward, Osaka City, Osaka Prefecture

Completion Date: December 2005

Structure: Reinforced Concrete

Total Units: 56

Floor/Total Floors: 12th floor (Unit 1204) / 1 basement level, 15 floors above ground

Exclusive Area: 81.49 m²

Construction: DAITETSU KOGYO CO.,LTD.

Management Company: Global Community Co., Ltd.

Management Type: Fully outsourced / On-site management during the day

Land Rights: Freehold

Access:

- Approx. 3-minute walk to "Minami-Morimachi" Station (Osaka Metro Tanimachi and Sakaisuji Lines)
- Approx. 4-minute walk to "Osaka Tenmangu" Station (JR Tozai Line)



Room Plan

Fully Renovated in November 2024

Price: 84,900,000 yen

Layout: 3LDK
(3 rooms + living room, dining room, and kitchen)

Main Orientation: South

Balcony Area: 10.02 m²

Management Fee: 9,980 yen/month

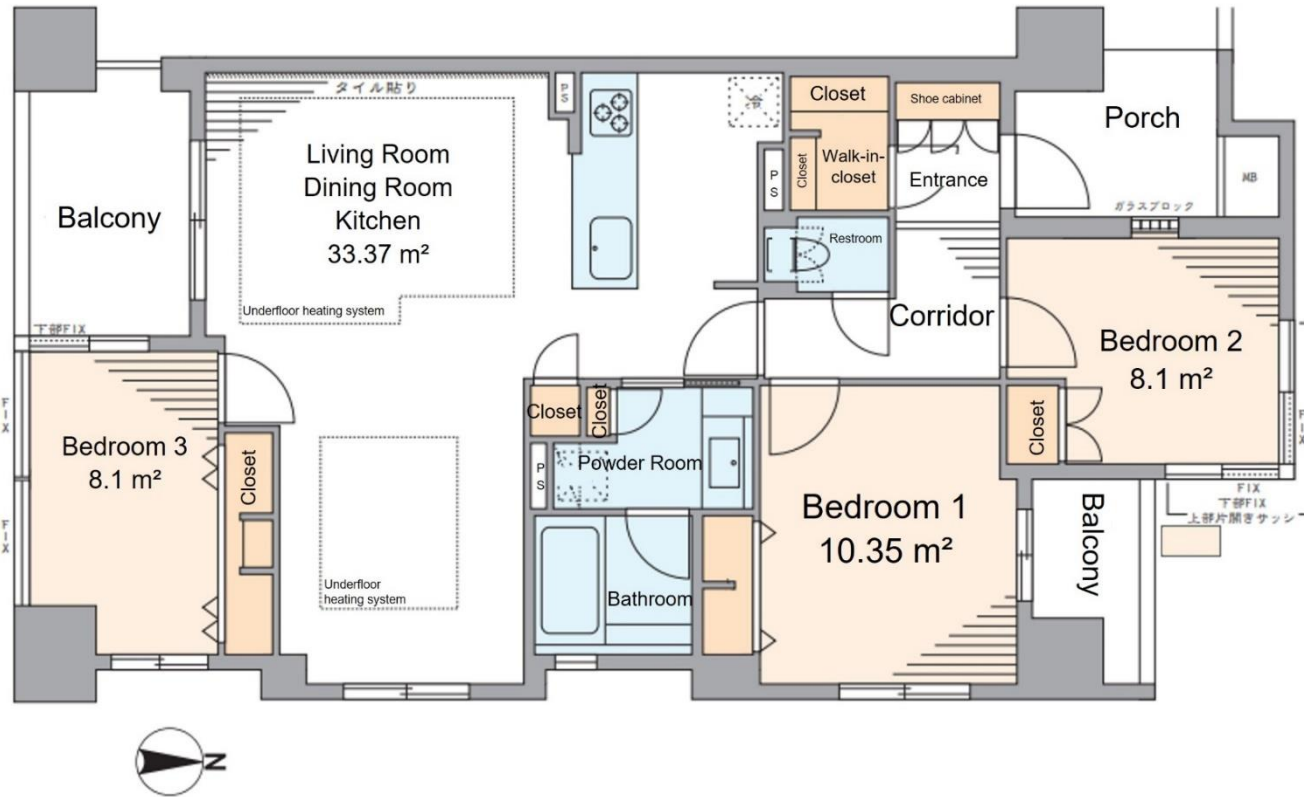
Repair Fund Contribution: 24,690 yen/month

Current Status: Vacant

Move-in Date: Negotiable

Remarks:

Southeast corner unit on the 12th floor with dual-aspect windows in all rooms, ensuring brightness and ventilation. Spacious living and dining room of approx. 34 m², equipped with underfloor heating system. Can also be used as an office space. Major renovations and repairs of the common areas were completed in 2019.



Surroundings:

- Nishitenma Elementary School: Approx. 4-minute walk (approx. 300 meters)
- Tenma Junior High School: Approx. 9-minute walk (approx. 700 meters)
- Supermarket KOHYO Minami-Morimachi Store: Approx. 5-minute walk (approx. 350 meters)
- Supermarket LIFE Taiyuj Store: Approx. 7-minute walk (approx. 500 meters)

Room Photos

